

# MapAtWork

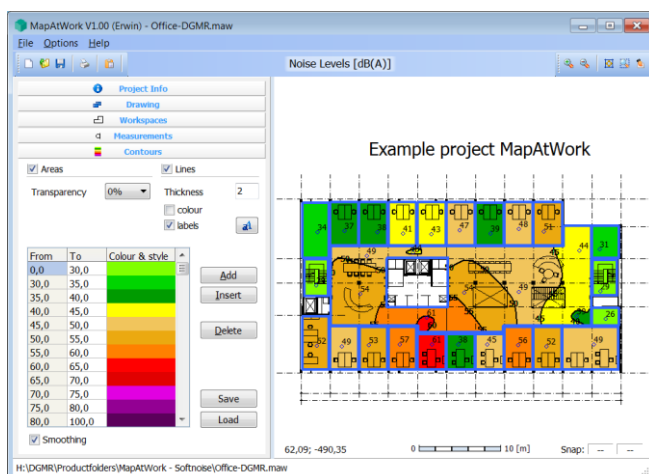
Software for mapping and reporting of measurements in workspaces



Health, Safety and Environment



Human Comfort



- ✓ Mapping any type of measurement result
- ✓ Includes pre-defined indicators for noise, air quality and human comfort aspects
- ✓ Other indicators can be added by the user
- ✓ Extremely easy to use. It will significantly reduce the time you normally spend on getting your measurement maps done
- ✓ Intuitive interface, learned within minutes
- ✓ Use of scanned maps and CAD drawings
- ✓ Easy reporting with free project viewer

**SoftNoise**  
DEVELOPERS PREDICTOR & LIMA

# MapAtWork

## Software for mapping and reporting of measurements in workspaces

MapAtWork is a powerful tool for visualization and reporting of any type of measurement result. Key words are fit for purpose, easy to use and cost efficient. It allows quick and professional mapping of your indoor and outdoor measurements.

### Fit for purpose

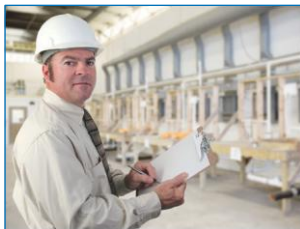
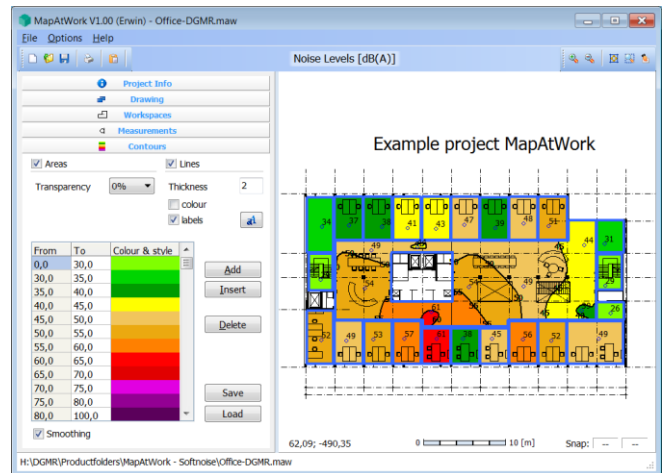
MapAtWork is dedicated, fit for purpose software with exactly those options you really need.

### Easy to use

MapAtWork is extremely easy to use and is fully interactive. It can be learned within minutes. After watching the 5 minute demonstration video you can start working with MapAtWork.

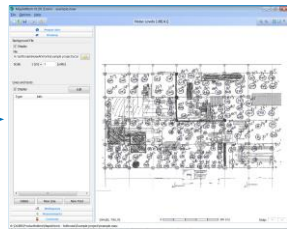
### Cost efficient

MapAtWork is cost efficient. It will significantly reduce the time you normally spend on getting your measurement maps done.



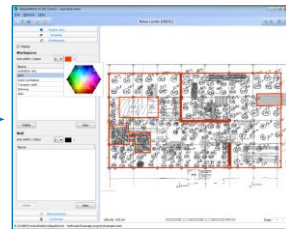
#### STEP 1

Mark the measurement locations on your map



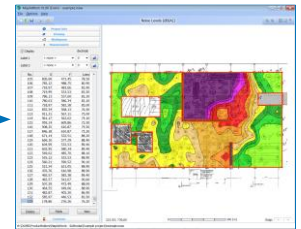
#### STEP 2

Open your scanned map or CAD drawing in MapAtWork



#### STEP 3

Define the workspace and inner walls by drawing them on the map



#### STEP 4

Click on the marked locations and enter the measurement results. Automatically the contours will be shown.

### For Health, Safety and Human Comfort

MapAtWork can be used for mapping any type of measurement result in any work environment like industry or offices. Indicators are fully configurable by the user.

### Includes pre-defined indicators

MapAtWork already includes several pre-defined indicators for noise, air quality and human comfort. Other indicators can be added by the user.

### Workstation and network licenses

Licenses are available for single use on a workstation or for concurrent use on a network. Licenses can be purchased as perpetual licenses or rented as time limited licenses.

### Free support

Support on the latest version of MapAtWork is always free of charge.

### Free updates

Updates e.g. from version 1.1 to 1.2 are free of charge. Upgrades e.g. from version 1 to 2 are offered separately.

### Data input

Image files in BMP/JPG formats as well as CAD files in DXF/DWG format can be used directly as drawing or background map. Measurement locations are entered by clicking on the locations on the map. The measured values are assigned manually or by copy/past from Excel.

### Reporting

Reporting is available via print output or to PDF files with selectable project content, copy to clipboard, save as high resolution BMP file and save as SHP or DXF file. In non-licensed mode MapAtWork runs as a free Project Viewer, allowing others to share and view project files produced by the licensed user. In Viewer mode the project cannot be edited or printed.

### System requirements

Windows XP, Windows Vista, Windows 7 or Windows 8. MapAtWork is available in different languages.

For referral to your local sales distributor, demo video and demo software download, please visit [www.softnoise.com](http://www.softnoise.com)

Softnoise GmbH Wilhelm-Brand-Str. 7, D-44141 Dortmund, Germany, Tel.: +49 (0) 231 42711 71, e-Mail: [info@softnoise.com](mailto:info@softnoise.com)

